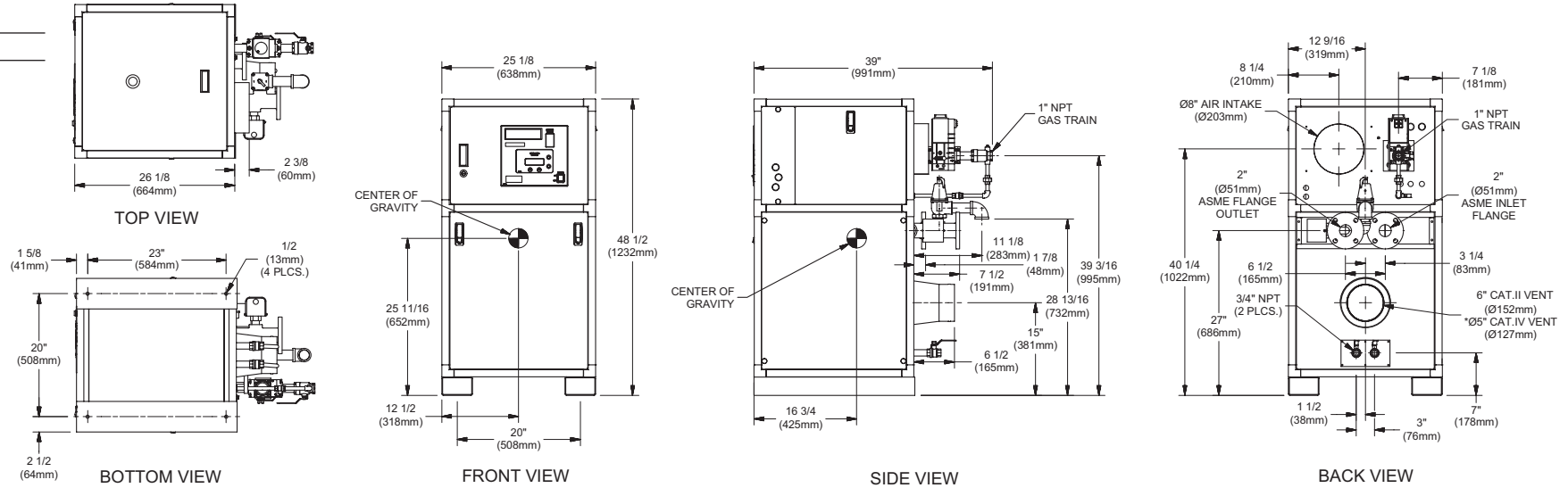


INDOOR UNIT

RSUB-55-K

CODE OPTIONS

CSD-1 Manual Reset LWCO



Notes:

1. Dimensions are approximate and should not be used to "rough-in" equipment.
2. Dimensions are subject to change without notice.

BOILER CERTIFIED RATINGS & CAPACITIES

| | | | |
|--------------------------------|--|-----------------------------------|--------------------|
| Fuel Type | Natural/Propane Gas | Boiler FLA | 4.4* |
| Input BTU/hr. | 500,000 / 147 kW | Min. Gas Pressure Required | 2" W.C.** |
| Output BTU/hr. | 428,000 / 125 kW | Max. Gas Pressure Allowed | 14" W.C. |
| Electrical Requirements | (L1, NEU, GND) 120VAC/ 1 ph / 60 hz | Operating Weight | 487 lbs. / 221 kg. |

BOILER TEMPERATURE RISE / PRESSURE DROP

| 20°F / 11.1°C | | | | 25°F / 13.9°C | | | |
|---------------|-----|---------------|-----|---------------|-----|---------------|-----|
| Flow Rate | | Pressure Drop | | Flow Rate | | Pressure Drop | |
| GPM | L/s | Ft | kPa | GPM | L/s | Ft | kPa |
| 42.8 | 2.7 | 0.53 | 1.6 | 34.2 | 2.2 | 0.35 | 1.0 |

BOILER / WATER HEATER TRIM & CONTROLS

| | | | |
|--------------------------|-------------------|--------------------------|---------------------------|
| Main Gas Valve | Dungs MBC-SE | Air Switch | Cleveland NS2 |
| Firing Valve | 1" | Blower Motor | Fasco 1/2 hp - FLA 1.8 |
| Ignition Control | Honeywell RM7895C | Relief Valve - MW | 3/4" x 3/4" set @ 125 psi |
| Operating Control | HeatNet® | Relief Valve - MB | 3/4" x 3/4" set @ 50 psi |
| High Limit | Jumo | Flow Switch | TACO |
| Main Ball Valve | 1" | Pilot Regulator | White-Rodgers 25M |

WATER HEATER HOURLY RECOVERY CAPACITY (GPH & LPH)

| 40°F | 22°C | 60°F | 33°C | 80°F | 44°C | 100°F | 56°C | 120°F | 67°C | 140°F | 78°C |
|------|------|------|------|------|------|-------|------|-------|------|-------|------|
| 1230 | 4651 | 820 | 3101 | 615 | 2326 | 492 | 1861 | 410 | 1550 | 352 | 1329 |

Futera III 500 model water heater not available for sale in Canada due to NRCan Regulations.

A.S.M.E.

| | | | |
|---------------------------------|-----------------------------|--------------------|-----------------------|
| ASME Sect IV Htg Surface | 69.51 Sq. Ft. / 6.46 Sq. M. | Design Data | Max. 160 psig & 250°F |
| Water Volume | 3.4 gal / 12.87 Liters | | |

* Add circulator amps.

** For incoming gas pressures lower than 2" W.C. natural or propane, consult factory.

REP FIRM _____
 SUBMITTED BY _____
 JOB NAME _____
 ARCHITECT _____
 ENGINEER _____
 CONTRACTOR _____
 DATE _____

FUTERA III 500

Category II or IV Appliance

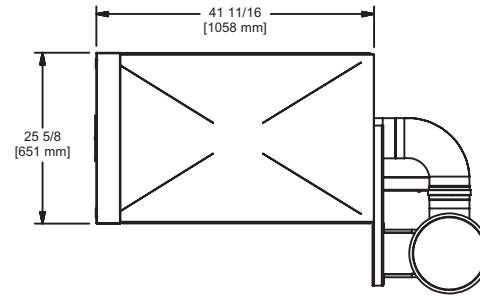
(see Installation and Operation Manual for venting information)



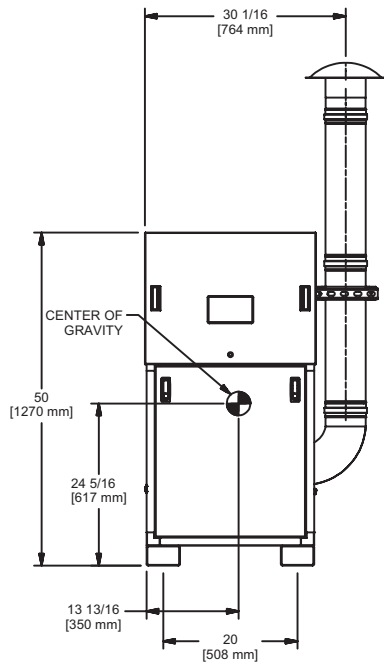
A Division of Mestek, Inc.
 Westfield, MA 01085
 (413) 568-9571

OUTDOOR UNIT

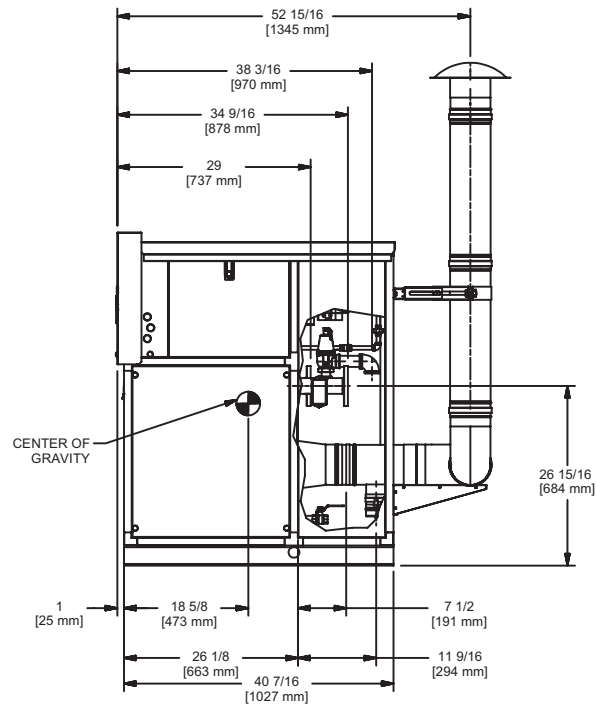
RSUB-110-B



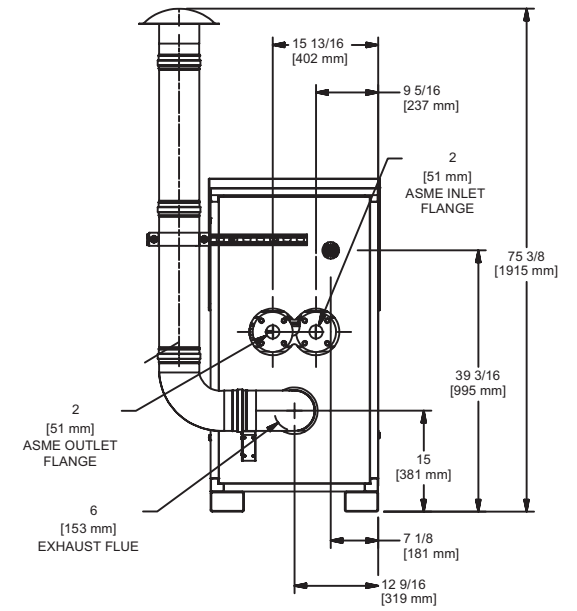
TOP VIEW



FRONT VIEW



SIDE VIEW



BACK VIEW

FUTERA III 500

Notes:

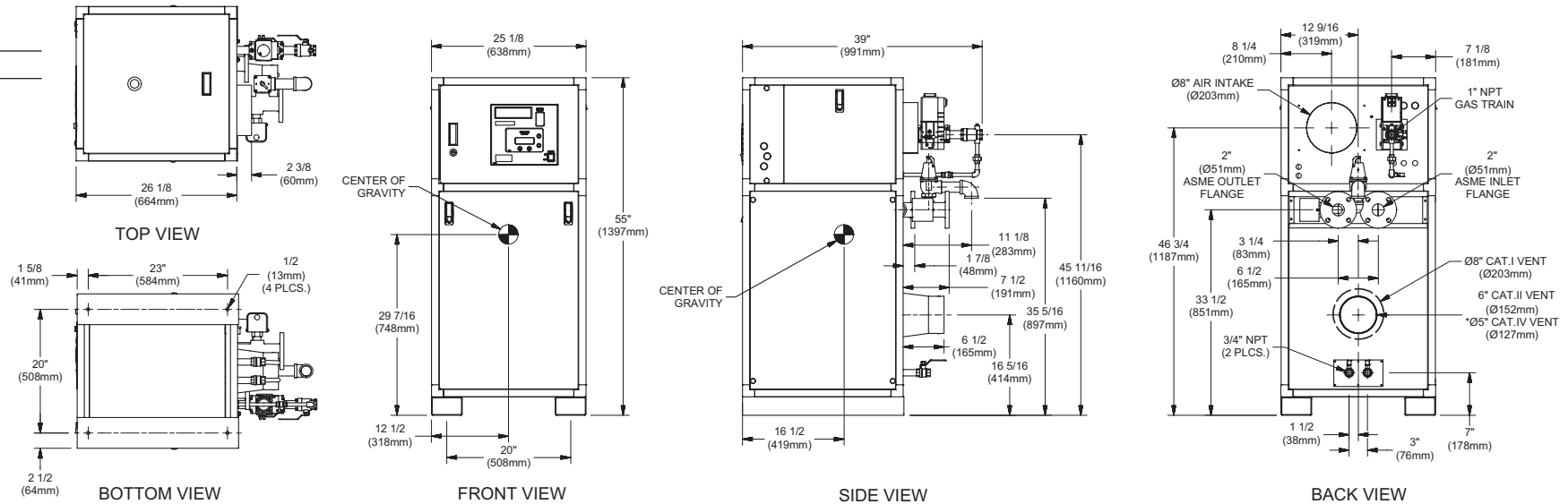
1. Dimensions are approximate and should not be used to "rough-in" equipment.
2. Dimensions are subject to change without notice.

INDOOR UNIT

RSUB-56-L

CODE OPTIONS

CSD-1 Manual Reset LWCO



Notes:

1. Dimensions are approximate and should not be used to "rough-in" equipment.
2. Dimensions are subject to change without notice.

BOILER CERTIFIED RATINGS & CAPACITIES

| | | | |
|--------------------------------|--|-----------------------------------|--------------------|
| Fuel Type | Natural/Propane Gas | Boiler FLA | 4.4* |
| Input BTU/hr. | 750,000 / 220 kW | Min. Gas Pressure Required | 2" W.C.** |
| Output BTU/hr. | 640,500 / 188 kW | Max. Gas Pressure Allowed | 14" W.C. |
| Electrical Requirements | (L1, NEU, GND) 120VAC/ 1 ph / 60 hz | Operating Weight | 585 lbs. / 266 kg. |

BOILER TEMPERATURE RISE / PRESSURE DROP

| 20°F / 11.1°C | | | | 25°F / 13.9°C | | | | 30°F / 16.7°C | | | | 35°F / 19.4°C | | | |
|---------------|-----|---------------|-----|---------------|-----|---------------|-----|---------------|-----|---------------|-----|---------------|-----|---------------|-----|
| Flow Rate | | Pressure Drop | | Flow Rate | | Pressure Drop | | Flow Rate | | Pressure Drop | | Flow Rate | | Pressure Drop | |
| GPM | L/s | Ft | kPa | GPM | L/s | Ft | kPa | GPM | L/s | Ft | kPa | GPM | L/s | Ft | kPa |
| 64.1 | 4.0 | 1.58 | 4.7 | 51.2 | 3.2 | 1.04 | 3.1 | 42.7 | 2.7 | 0.75 | 2.2 | 36.6 | 2.3 | 0.56 | 1.7 |

BOILER / WATER HEATER TRIM & CONTROLS

| | | | |
|--------------------------|-------------------|--------------------------|---------------------------|
| Main Gas Valve | Dungs MBC-SE | Air Switch | Cleveland NS2 |
| Firing Valve | 1" | Blower Motor | Fasco 1/2 hp - FLA 2.3 |
| Ignition Control | Honeywell RM7895C | Relief Valve - MW | 3/4" x 3/4" set @ 125 psi |
| Operating Control | HeatNet® | Relief Valve - MB | 3/4" x 3/4" set @ 50 psi |
| High Limit | Jumo | Flow Switch | TACO |
| Main Ball Valve | 1" | Pilot Regulator | White-Rodgers 25M |

WATER HEATER HOURLY RECOVERY CAPACITY (GPH & LPH)

| 40°F | 22°C | 60°F | 33°C | 80°F | 44°C | 100°F | 56°C | 120°F | 67°C | 140°F | 78°C |
|------|------|------|------|------|------|-------|------|-------|------|-------|------|
| 1873 | 7079 | 1248 | 4719 | 936 | 3539 | 749 | 2832 | 624 | 2360 | 535 | 2023 |

Futera III 750 model water heater not available for sale in Canada due to NRCan Regulations.

A.S.M.E.

| | | | |
|---------------------------------|-----------------------------|--------------------|-----------------------|
| ASME Sect IV Htg Surface | 97.79 Sq. Ft. / 9.08 Sq. M. | Design Data | Max. 160 psig & 250°F |
| Water Volume | 3.7 gal / 14.01 Liters | | |

* Add circulator amps.

** For incoming gas pressures lower than 2" W.C. natural or propane, consult factory.

REP FIRM _____
 SUBMITTED BY _____
 JOB NAME _____
 ARCHITECT _____
 ENGINEER _____
 CONTRACTOR _____
 DATE _____

FUTERA III 750

Category I, II or IV Appliance

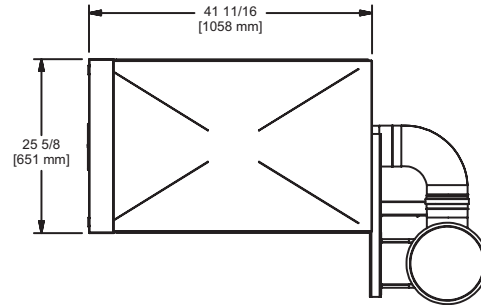
(see Installation and Operation Manual for venting information)



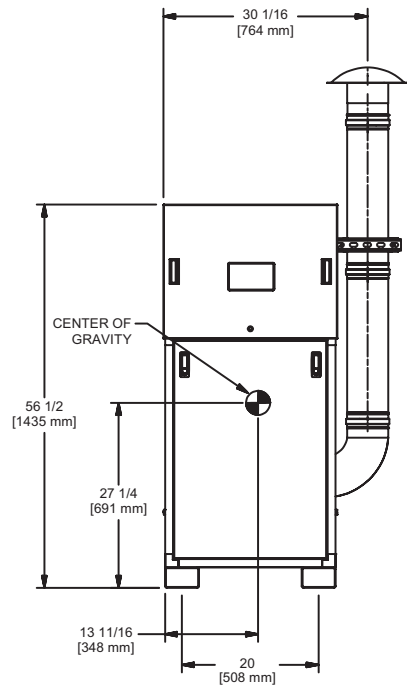
A Division of Mestek, Inc.
 Westfield, MA 01085
 (413) 568-9571

OUTDOOR UNIT

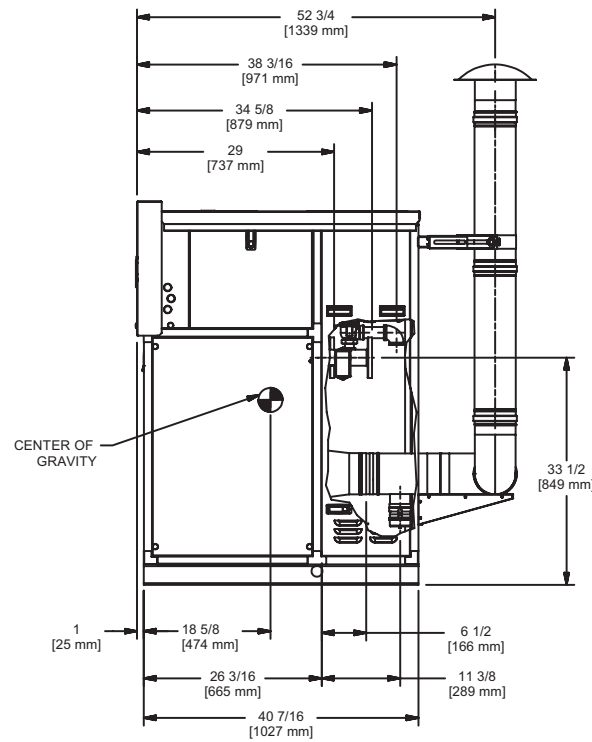
RSUB-111-B



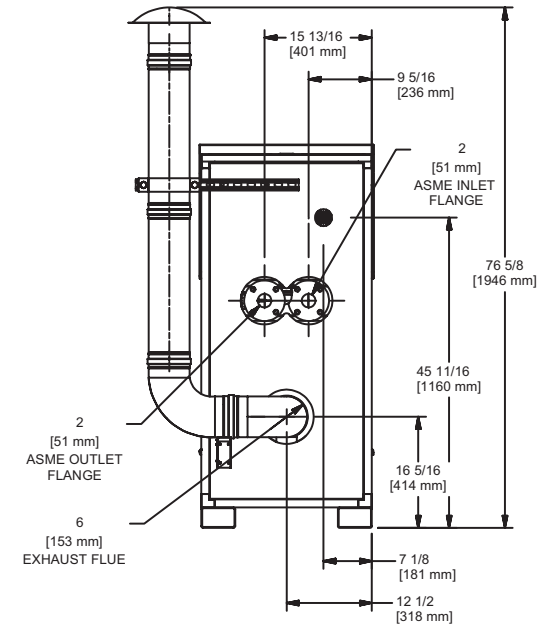
TOP VIEW



FRONT VIEW



SIDE VIEW



BACK VIEW

FUTERA III 750

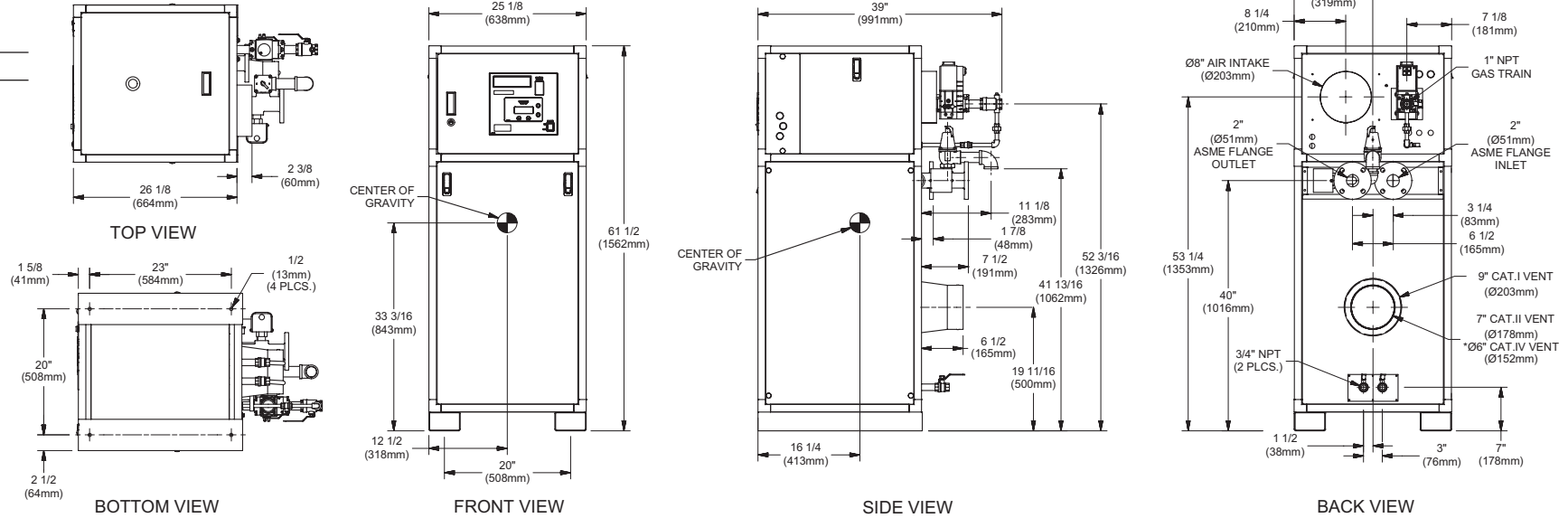
Notes:

1. Dimensions are approximate and should not be used to "rough-in" equipment.
2. Dimensions are subject to change without notice.

INDOOR UNIT

CODE OPTIONS

CSD-1 Manual Reset LWCO



Notes:

1. Dimensions are approximate and should not be used to "rough-in" equipment.
2. Dimensions are subject to change without notice.

BOILER CERTIFIED RATINGS & CAPACITIES

| | | | |
|--------------------------------|-------------------------------------|-----------------------------------|--------------------|
| Fuel Type | Natural/Propane Gas | Boiler FLA | 8.2* |
| Input BTU/hr. | 1,000,000 / 293 kW | Min. Gas Pressure Required | 2" W.C.** |
| Output BTU/hr. | 853,000 / 250 kW | Max. Gas Pressure Allowed | 14" W.C. |
| Electrical Requirements | (L1, NEU, GND) 120VAC/1 ph/60 hz | Operating Weight | 623 lbs. / 283 kg. |

BOILER TEMPERATURE RISE / PRESSURE DROP

| 20°F / 11.1°C | | | | 25°F / 13.9°C | | | | 30°F / 16.7°C | | | | 35°F / 19.4°C | | | |
|---------------|-----|---------------|------|---------------|-----|---------------|-----|---------------|-----|---------------|-----|---------------|-----|---------------|-----|
| Flow Rate | | Pressure Drop | | Flow Rate | | Pressure Drop | | Flow Rate | | Pressure Drop | | Flow Rate | | Pressure Drop | |
| GPM | L/s | Ft | kPa | GPM | L/s | Ft | kPa | GPM | L/s | Ft | kPa | GPM | L/s | Ft | kPa |
| 85.3 | 5.4 | 3.46 | 10.2 | 68.2 | 4.3 | 2.29 | 6.7 | 56.9 | 3.6 | 1.63 | 4.8 | 48.7 | 3.1 | 1.23 | 3.6 |

BOILER / WATER HEATER TRIM & CONTROLS

| | | | |
|--------------------------|-------------------|--------------------------|---------------------------|
| Main Gas Valve | Dungs MBC-SE | Air Switch | Cleveland NS2 |
| Firing Valve | 1" | Blower Motor | Fasco 1/2 hp - FLA 2.3 |
| Ignition Control | Honeywell RM7895C | Relief Valve - MW | 3/4" x 3/4" set @ 125 psi |
| Operating Control | HeatNet® | Relief Valve - MB | 3/4" x 3/4" set @ 50 psi |
| High Limit | Jumo | Flow Switch | TACO |
| Main Ball Valve | 1" | Pilot Regulator | White-Rodgers 25M |

WATER HEATER HOURLY RECOVERY CAPACITY (GPH & LPH)

| | | | | | | | | | | | |
|------|------|------|------|------|------|-------|------|-------|------|-------|------|
| 40°F | 22°C | 60°F | 33°C | 80°F | 44°C | 100°F | 56°C | 120°F | 67°C | 140°F | 78°C |
| 2491 | 9416 | 1661 | 6277 | 1245 | 4708 | 996 | 3766 | 830 | 3139 | 712 | 2690 |

Futera III 1000 model water heater not available for sale in Canada due to NRCAN Regulations.

A.S.M.E.

| | | | |
|---------------------------------|-------------------------------|--------------------|-----------------------|
| ASME Sect IV Htg Surface | 126.07 Sq. Ft. / 11.71 Sq. M. | Design Data | Max. 160 psig & 250°F |
| Water Volume | 4 gal / 15.14 Liters | | |

* Add circulator amps.
 ** For incoming gas pressures lower than 2" W.C. natural or propane, consult factory.

REP FIRM _____
 SUBMITTED BY _____
 JOB NAME _____
 ARCHITECT _____
 ENGINEER _____
 CONTRACTOR _____
 DATE _____

FUTERA III 1000

Category I, II or IV Appliance

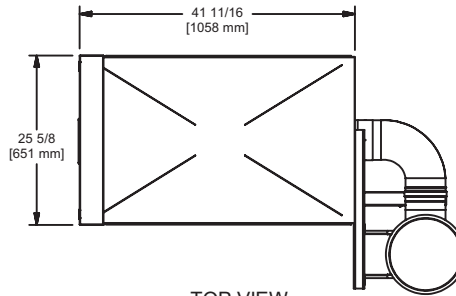
(see Installation and Operation Manual for venting information)



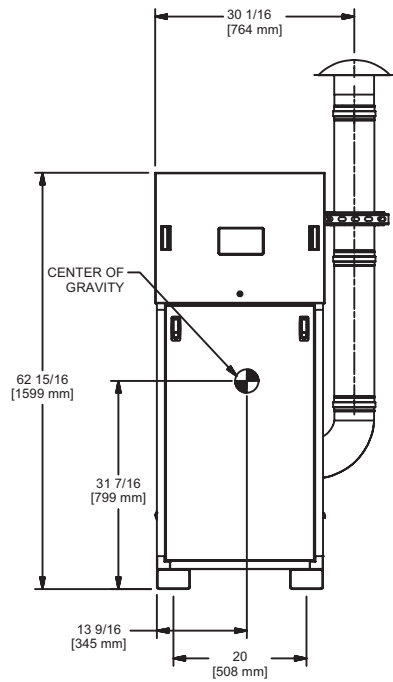
A Division of Mestec, Inc.
 Westfield, MA 01085
 (413) 568-9571

OUTDOOR UNIT

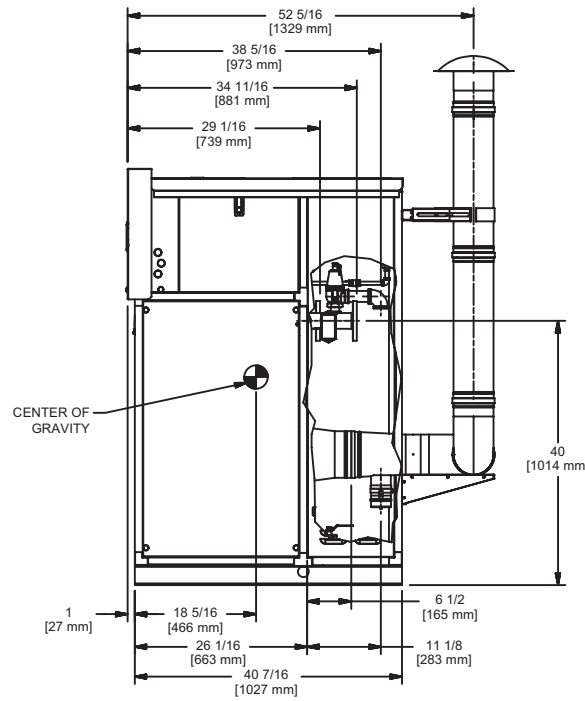
RSUB-112-B



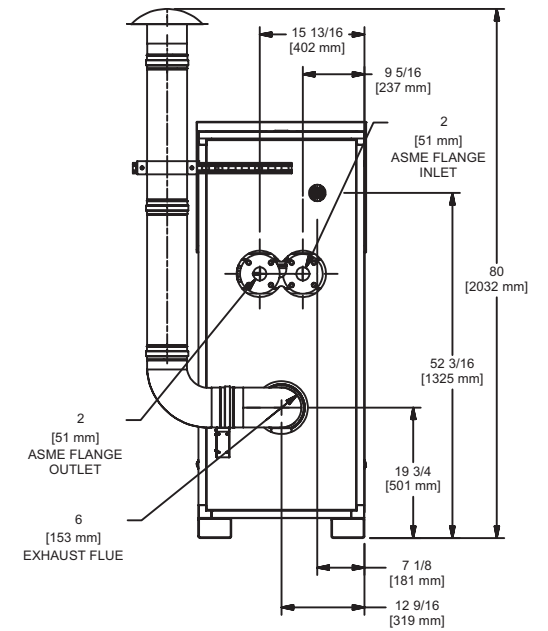
TOP VIEW



FRONT VIEW



SIDE VIEW



BACK VIEW

FUTERA III 1000

Notes:

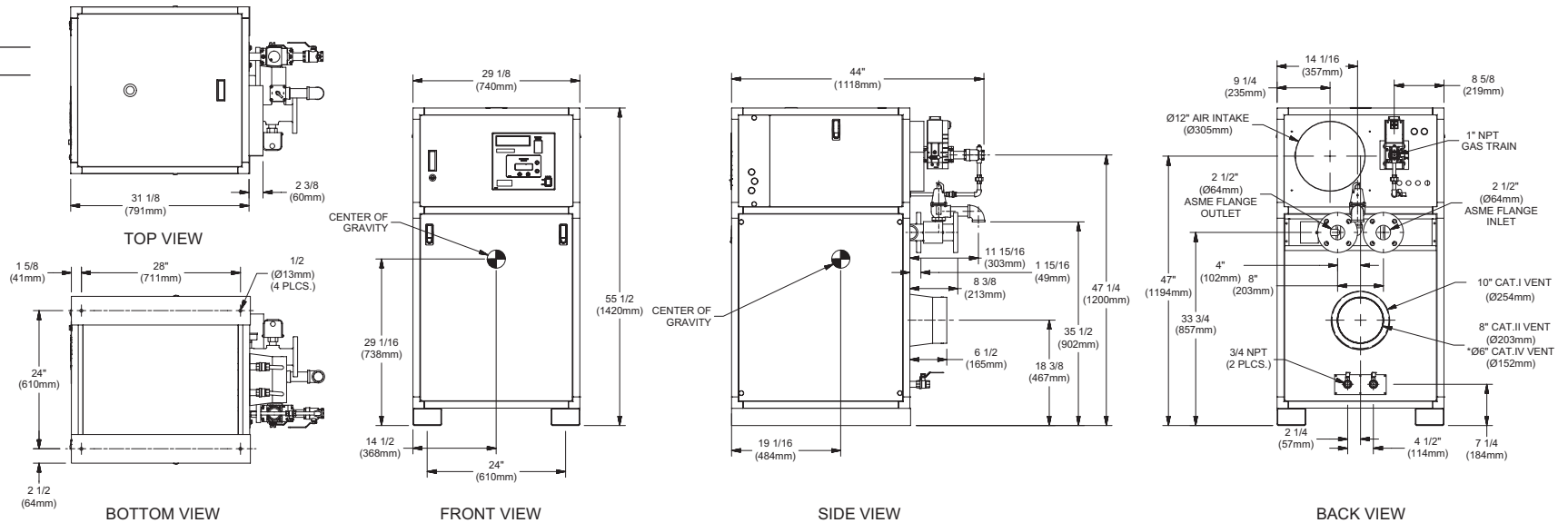
1. Dimensions are approximate and should not be used to "rough-in" equipment.
2. Dimensions are subject to change without notice.

INDOOR UNIT

RSUB-58-L

CODE OPTIONS

CSD-1 Manual Reset LWCO



Notes:

1. Dimensions are approximate and should not be used to "rough-in" equipment.
2. Dimensions are subject to change without notice.

BOILER CERTIFIED RATINGS & CAPACITIES

| | | | |
|--------------------------------|---|-----------------------------------|--------------------|
| Fuel Type | Natural/Propane Gas | Boiler FLA | 11.3* |
| Input BTU/hr. | 1,250,000 / 366 kW | Min. Gas Pressure Required | 2" W.C.** |
| Output BTU/hr. | 1,066,250 / 312 kW | Max. Gas Pressure Allowed | 14" W.C. |
| Electrical Requirements | (L1, NEU, GND) 120VAC / 1 ph / 60 hz | Operating Weight | 748 lbs. / 340 kg. |

BOILER TEMPERATURE RISE / PRESSURE DROP

| 20°F / 11.1°C | | | | 25°F / 13.9°C | | | | 30°F / 16.7°C | | | | 35°F / 19.4°C | | | |
|---------------|-----|---------------|-----|---------------|-----|---------------|-----|---------------|-----|---------------|-----|---------------|-----|---------------|-----|
| Flow Rate | | Pressure Drop | | Flow Rate | | Pressure Drop | | Flow Rate | | Pressure Drop | | Flow Rate | | Pressure Drop | |
| GPM | L/s | Ft | kPa | GPM | L/s | Ft | kPa | GPM | L/s | Ft | kPa | GPM | L/s | Ft | kPa |
| 107.0 | 6.8 | 2.14 | 6.3 | 85.6 | 5.4 | 1.42 | 4.2 | 71.3 | 4.5 | 1.01 | 3.0 | 61.1 | 3.9 | .76 | 2.2 |

BOILER / WATER HEATER TRIM & CONTROLS

| | | | |
|--------------------------|-------------------|--------------------------|---------------------------|
| Main Gas Valve | Dungs MBC-SE | Air Switch | Cleveland NS2 |
| Firing Valve | 1" | Blower Motor | Fasco 1 hp - FLA 2.1 |
| Ignition Control | Honeywell RM7895C | Relief Valve - MW | 3/4" x 3/4" set @ 125 psi |
| Operating Control | HeatNet® | Relief Valve - MB | 3/4" x 1" set @ 50 psi |
| High Limit | Jumo | Flow Switch | TACO |
| Main Ball Valve | 1" | Pilot Regulator | White-Rodgers 25M |

WATER HEATER HOURLY RECOVERY CAPACITY (GPH & LPH)

| 40°F | 22°C | 60°F | 33°C | 80°F | 44°C | 100°F | 56°C | 120°F | 67°C | 140°F | 78°C |
|------|-------|------|------|------|------|-------|------|-------|------|-------|------|
| 3102 | 11727 | 2068 | 7818 | 1551 | 5864 | 1241 | 4691 | 1034 | 3909 | 886 | 3351 |

Futera III 1250 model water heater not available for sale in Canada due to NRCAN Regulations.

A.S.M.E.

| | | | |
|---------------------------------|-------------------------------|--------------------|-----------------------|
| ASME Sect IV Htg Surface | 133.76 Sq. Ft. / 12.43 Sq. M. | Design Data | Max. 160 psig & 250°F |
| Water Volume | 4.7 gal / 17.79 Liters | | |

* Add circulator amps.

** For incoming gas pressures lower than 2" W.C. natural or propane, consult factory.

REP FIRM _____
 SUBMITTED BY _____
 JOB NAME _____
 ARCHITECT _____
 ENGINEER _____
 CONTRACTOR _____
 DATE _____

FUTERA III 1250

Category I, II or IV Appliance

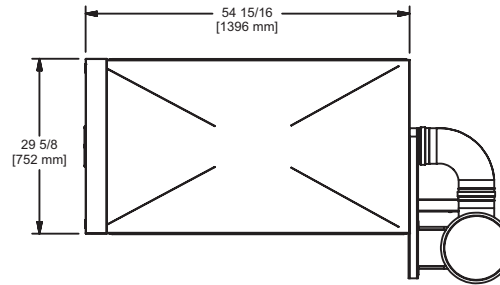
(see Installation and Operation Manual for venting information)



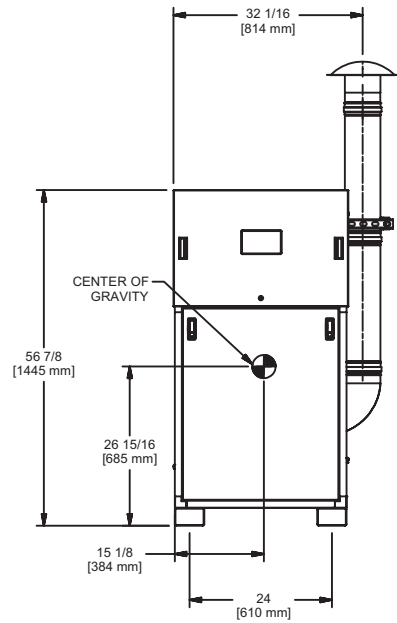
A Division of Mestek, Inc.
 Westfield, MA 01085
 (413) 568-9571

OUTDOOR UNIT

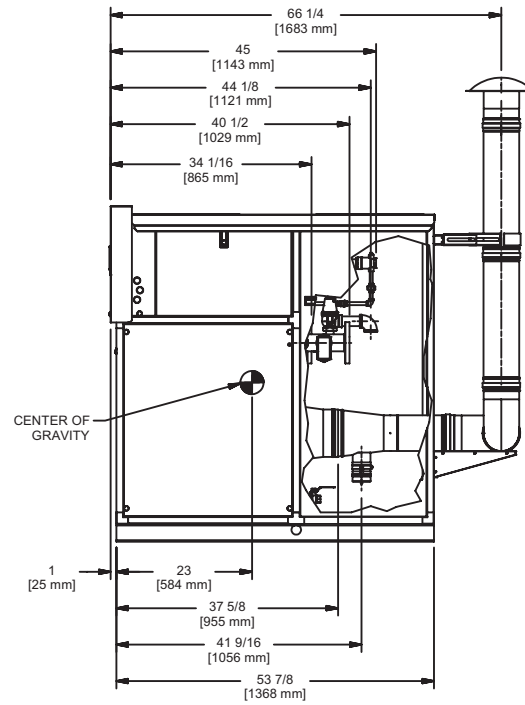
RSUB-113-B



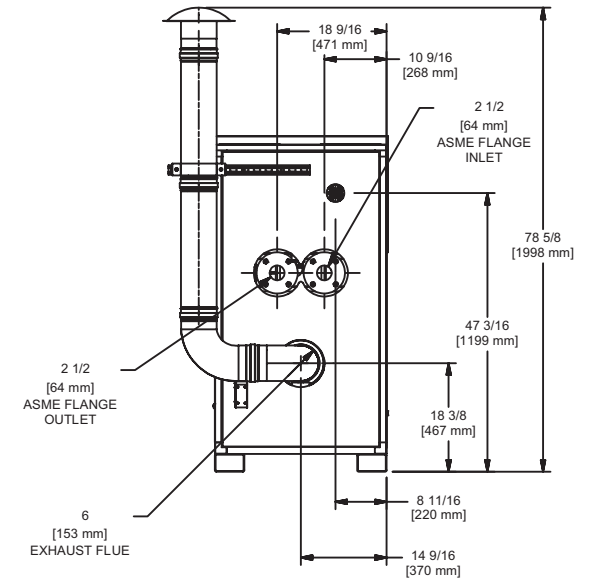
TOP VIEW



FRONT VIEW



SIDE VIEW



BACK VIEW

FUTERA III 1250

Notes:

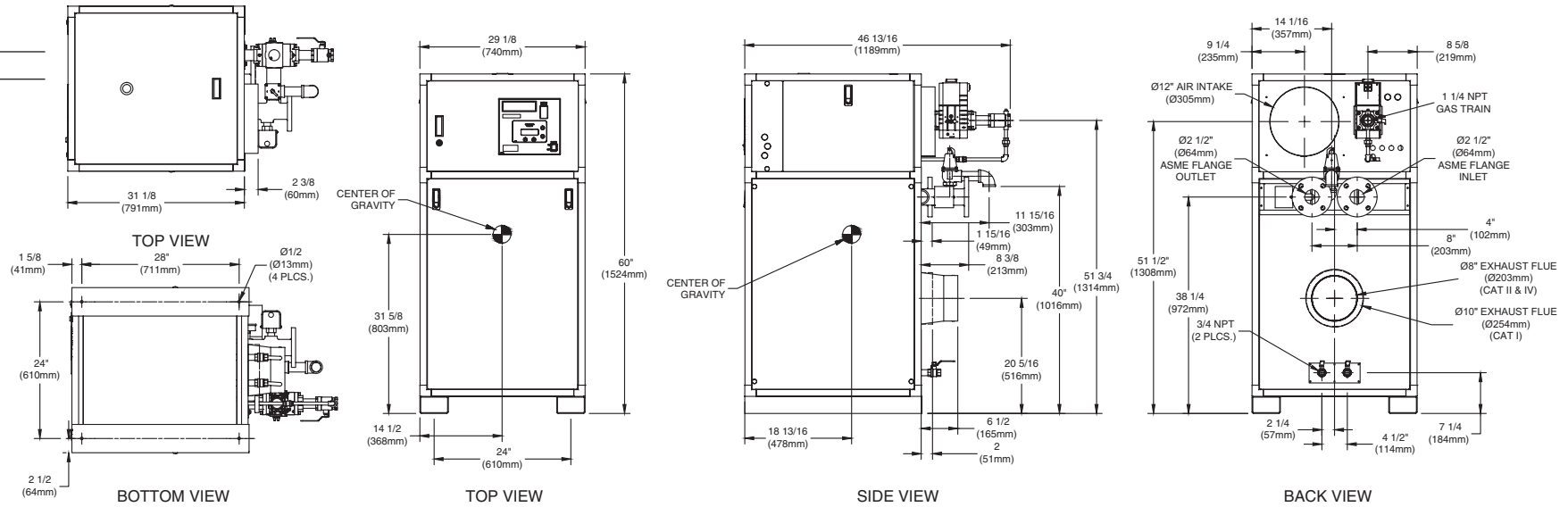
1. Dimensions are approximate and should not be used to "rough-in" equipment.
2. Dimensions are subject to change without notice.

INDOOR UNIT

RSUB-59-K

CODE OPTIONS

CSD-1 Manual Reset LWCO



Notes:

1. Dimensions are approximate and should not be used to "rough-in" equipment.
2. Dimensions are subject to change without notice.

BOILER CERTIFIED RATINGS & CAPACITIES

| | | | |
|--------------------------------|--|-----------------------------------|--------------------|
| Fuel Type | Natural/Propane Gas | Boiler FLA | 11.3* |
| Input BTU/hr. | 1,500,000 / 440 kW | Min. Gas Pressure Required | 2" W.C.** |
| Output BTU/hr. | 1,278,000 / 374 kW | Max. Gas Pressure Allowed | 14" W.C. |
| Electrical Requirements | (L1, NEU, GND) 120VAC/ 1 ph / 60 hz | Operating Weight | 824 lbs. / 374 kg. |

BOILER TEMPERATURE RISE / PRESSURE DROP

| 20°F / 11.1°C | | | | 25°F / 13.9°C | | | | 30°F / 16.7°C | | | | 35°F / 19.4°C | | | |
|---------------|-----|---------------|------|---------------|-----|---------------|-----|---------------|-----|---------------|-----|---------------|-----|---------------|-----|
| Flow Rate | | Pressure Drop | | Flow Rate | | Pressure Drop | | Flow Rate | | Pressure Drop | | Flow Rate | | Pressure Drop | |
| GPM | L/s | Ft | kPa | GPM | L/s | Ft | kPa | GPM | L/s | Ft | kPa | GPM | L/s | Ft | kPa |
| 127.8 | 8.1 | 3.58 | 10.6 | 102.2 | 6.5 | 2.37 | 7.0 | 85.2 | 5.4 | 1.69 | 5.0 | 73.0 | 4.6 | 1.27 | 3.7 |

BOILER / WATER HEATER TRIM & CONTROLS

| | | | |
|--------------------------|-------------------|--------------------------|---------------------------|
| Main Gas Valve | Dungs MBC-SE | Air Switch | Cleveland NS2 |
| Firing Valve | 1 1/4" | Blower Motor | Fasco 1 hp - FLA 2.5 |
| Ignition Control | Honeywell RM7895C | Relief Valve - MW | 3/4" x 3/4" set @ 125 psi |
| Operating Control | HeatNet® | Relief Valve - MB | 1" x 1 1/4" set @ 50 psi |
| High Limit | Jumo | Flow Switch | TACO |
| Main Ball Valve | 1 1/4" | Pilot Regulator | White-Rodgers 25M |

WATER HEATER HOURLY RECOVERY CAPACITY (GPH & LPH)

| 40°F | 22°C | 60°F | 33°C | 80°F | 44°C | 100°F | 56°C | 120°F | 67°C | 140°F | 78°C |
|------|-------|------|------|------|------|-------|------|-------|------|-------|------|
| 3714 | 14039 | 2476 | 9359 | 1857 | 7019 | 1486 | 5616 | 1238 | 4680 | 1061 | 4011 |

Futera III 1500 model water heater not available for sale in Canada due to NRCAN Regulations.

A.S.M.E.

| | | | |
|---------------------------------|-------------------------------|--------------------|-----------------------|
| ASME Sect IV Htg Surface | 161.16 Sq. Ft. / 14.97 Sq. M. | Design Data | Max. 160 psig & 250°F |
| Water Volume | 5 gal / 18.93 Liters | | |

* Add circulator amps.

** For incoming gas pressures lower than 2" W.C. natural or propane, consult factory.

REP FIRM _____
 SUBMITTED BY _____
 JOB NAME _____
 ARCHITECT _____
 ENGINEER _____
 CONTRACTOR _____
 DATE _____

FUTERA III 1500

Category I, II or IV Appliance

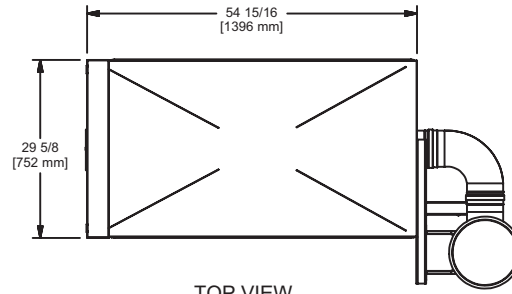
(see Installation and Operation Manual for venting information)



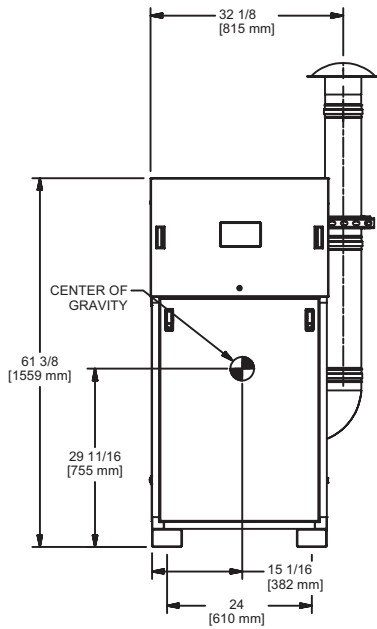
A Division of Mestek, Inc.
 Westfield, MA 01085
 (413) 568-9571

OUTDOOR UNIT

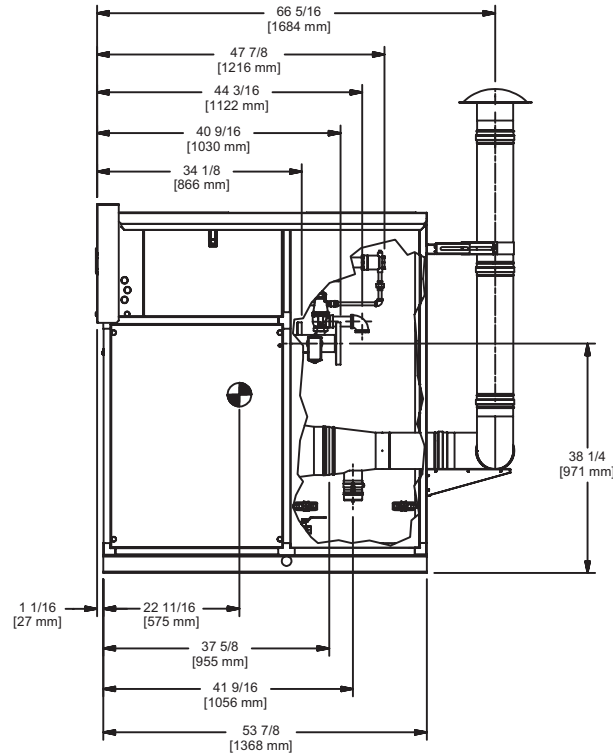
RSUB-114-B



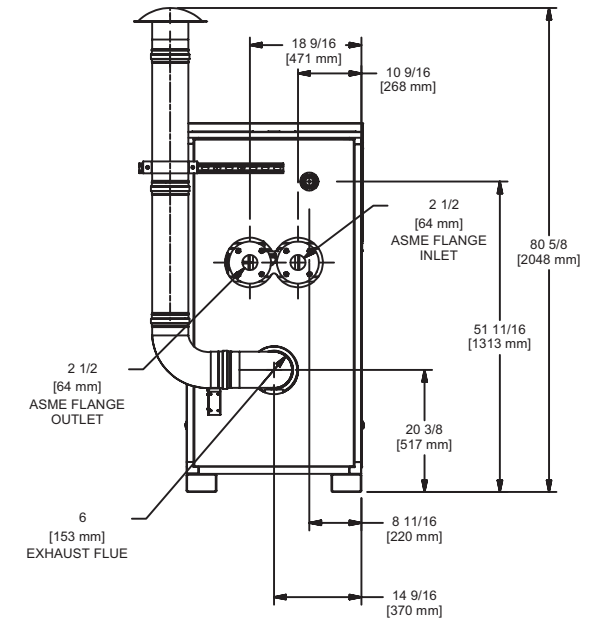
TOP VIEW



FRONT VIEW



SIDE VIEW



BACK VIEW

FUTERA III 1500

Notes:

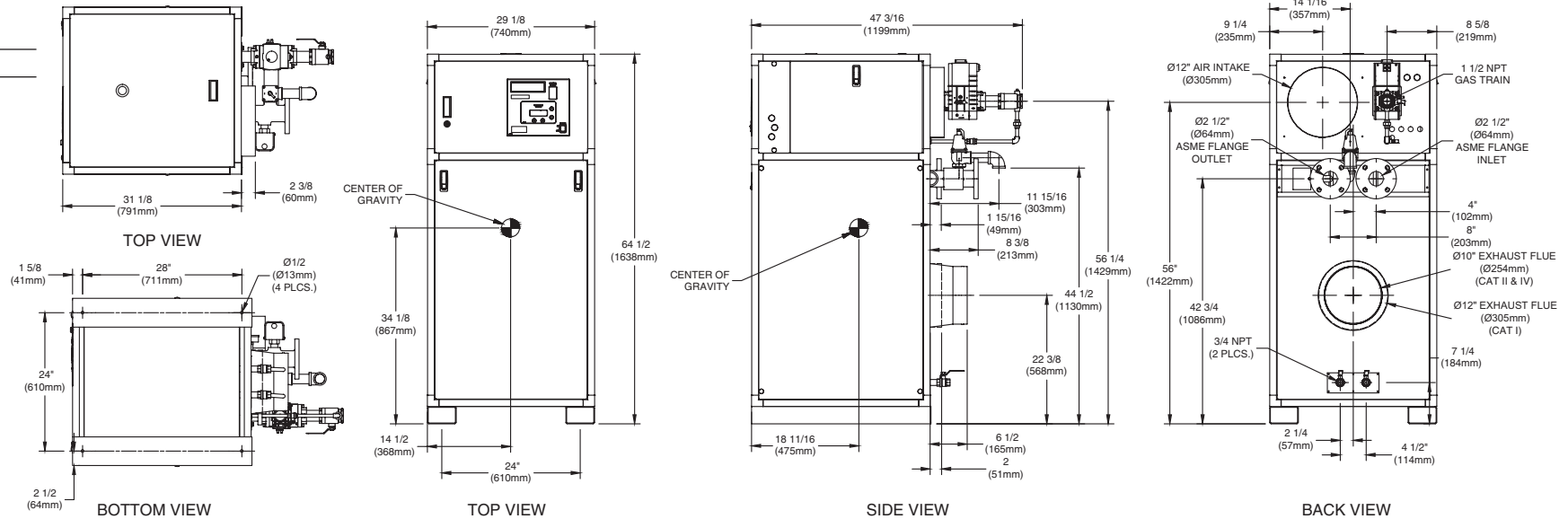
1. Dimensions are approximate and should not be used to "rough-in" equipment.
2. Dimensions are subject to change without notice.

INDOOR UNIT

RSUB-60-K

CODE OPTIONS

| | |
|-------|-------------------|
| CSD-1 | Manual Reset LWCO |
|-------|-------------------|



Notes:

1. Dimensions are approximate and should not be used to "rough-in" equipment.
2. Dimensions are subject to change without notice.

BOILER CERTIFIED RATINGS & CAPACITIES

| | | | |
|--------------------------------|--|-----------------------------------|--------------------|
| Fuel Type | Natural/Propane Gas | Boiler FLA | 11.3* |
| Input BTU/hr. | 1,750,000 / 513 kW | Min. Gas Pressure Required | 2" W.C.** |
| Output BTU/hr. | 1,491,000 / 437 kW | Max. Gas Pressure Allowed | 14" W.C. |
| Electrical Requirements | (L1, NEU, GND) 120VAC/ 1 ph / 60 hz | Operating Weight | 827 lbs. / 375 kg. |

BOILER TEMPERATURE RISE / PRESSURE DROP

| 25°F / 13.9°C | | | | 30°F / 16.7°C | | | | 35°F / 19.4°C | | | |
|---------------|-----|---------------|------|---------------|-----|---------------|-----|---------------|-----|---------------|-----|
| Flow Rate | | Pressure Drop | | Flow Rate | | Pressure Drop | | Flow Rate | | Pressure Drop | |
| GPM | L/s | Ft | kPa | GPM | L/s | Ft | kPa | GPM | L/s | Ft | kPa |
| 119.3 | 7.5 | 3.69 | 10.9 | 99.4 | 6.3 | 2.63 | 7.8 | 85.2 | 5.4 | 1.98 | 5.8 |

BOILER / WATER HEATER TRIM & CONTROLS

| | | | |
|--------------------------|-------------------|--------------------------|---------------------------|
| Main Gas Valve | Dungs MBC-SE | Air Switch | Cleveland NS2 |
| Firing Valve | 1 1/2" | Blower Motor | Fasco 1 hp - FLA 3.0 |
| Ignition Control | Honeywell RM7895C | Relief Valve - MW | 3/4" x 3/4" set @ 125 psi |
| Operating Control | HeatNet® | Relief Valve - MB | 1" x 1 1/4" set @ 50 psi |
| High Limit | Jumo | Flow Switch | TACO |
| Main Ball Valve | 1 1/2" | Pilot Regulator | White-Rodgers 25M |

WATER HEATER HOURLY RECOVERY CAPACITY (GPH & LPH)

| | | | | | | | | | | | |
|------|-------|------|-------|------|------|-------|------|-------|------|-------|------|
| 40°F | 22°C | 60°F | 33°C | 80°F | 44°C | 100°F | 56°C | 120°F | 67°C | 140°F | 78°C |
| 4317 | 16319 | 2878 | 10879 | 2159 | 8160 | 1727 | 6528 | 1439 | 5440 | 1233 | 4663 |

Futera III 1750 model water heater not available for sale in Canada due to NRCAN Regulations.

A.S.M.E.

| | | | |
|---------------------------------|-------------------------------|--------------------|-----------------------|
| ASME Sect IV Htg Surface | 188.57 Sq. Ft. / 17.52 Sq. M. | Design Data | Max. 160 psig & 250°F |
| Water Volume | 5.3 gal / 20.06 Liters | | |

* Add circulator amps.

** For incoming gas pressures lower than 2" W.C. natural or propane, consult factory.

REP FIRM _____

SUBMITTED BY _____

JOB NAME _____

ARCHITECT _____

ENGINEER _____

CONTRACTOR _____

DATE _____

FUTERA III 1750

Category I, II or IV Appliance

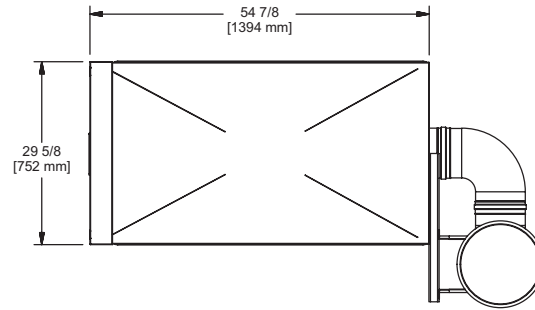
(see Installation and Operation Manual for venting information)



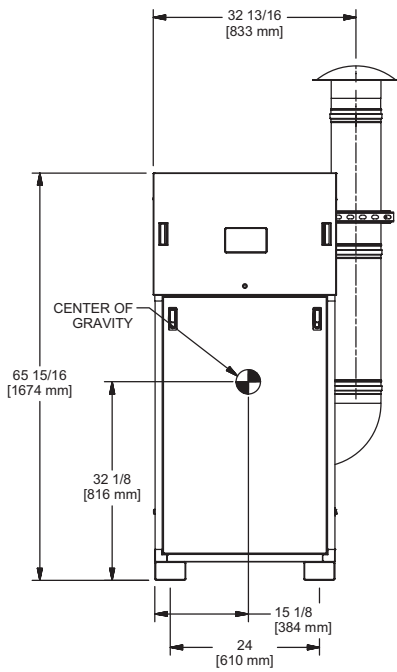
A Division of Mestek, Inc.
 Westfield, MA 01085
 (413) 568-9571

OUTDOOR UNIT

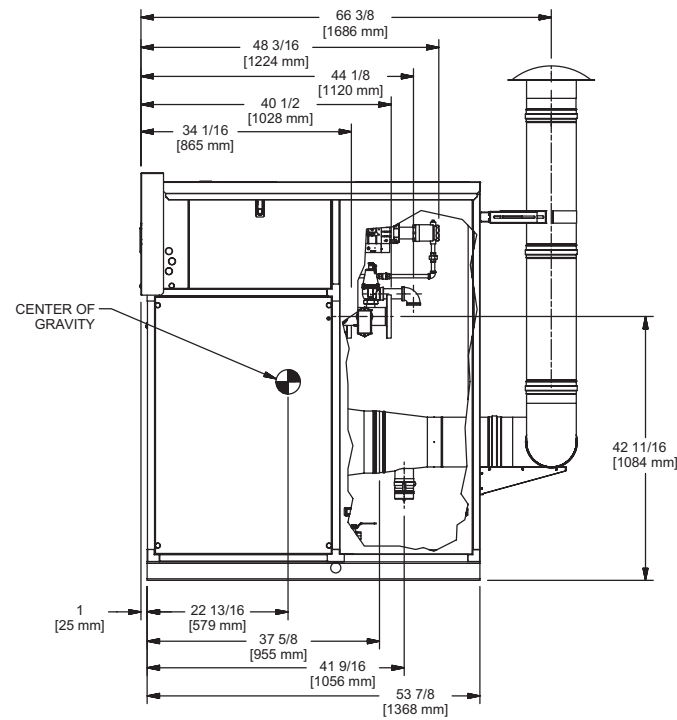
RSUB-115-B



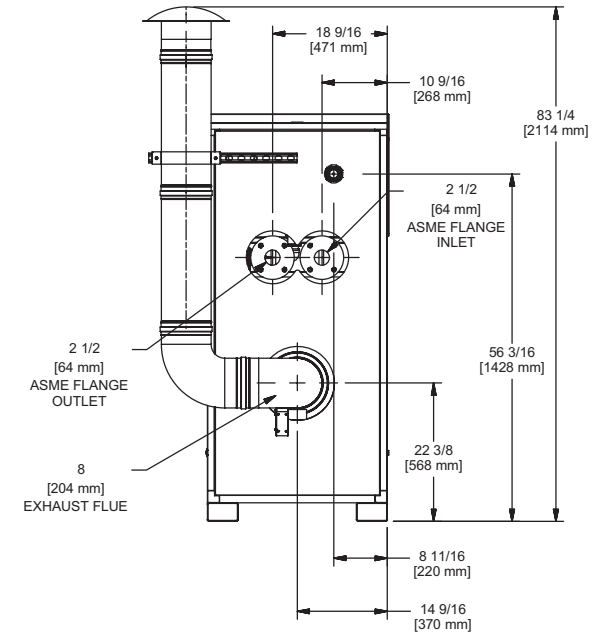
TOP VIEW



FRONT VIEW



SIDE VIEW



BACK VIEW

FUTERA III 1750

Notes:

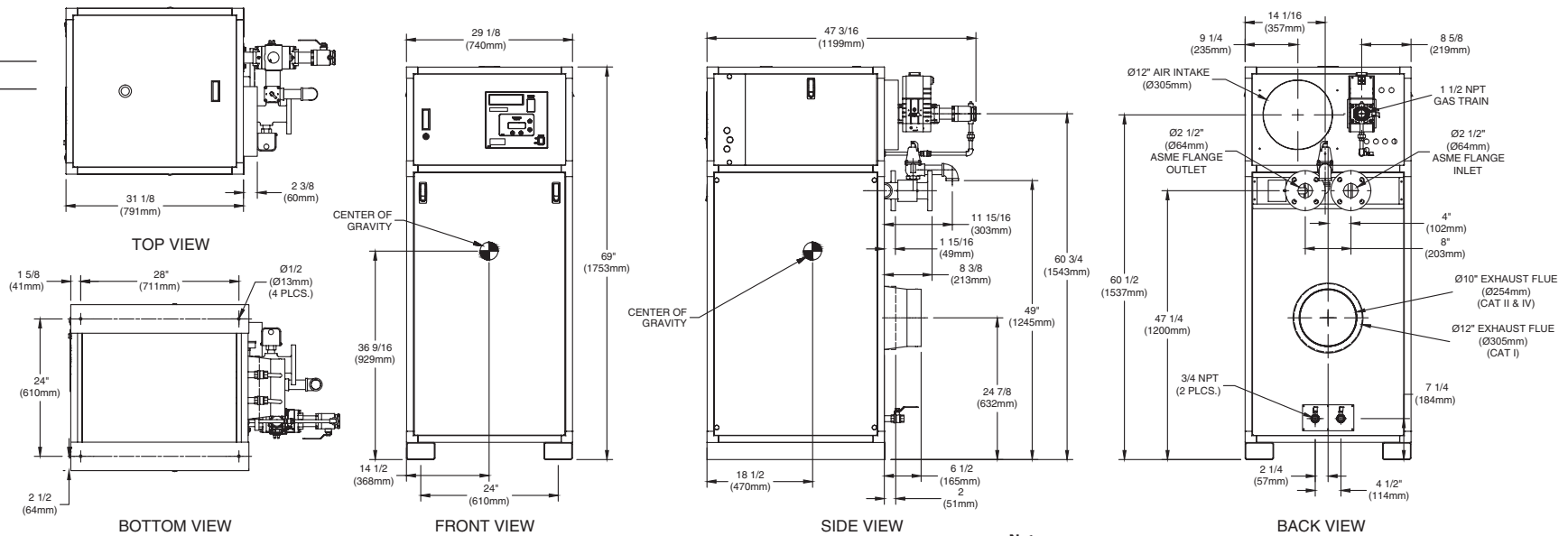
1. Dimensions are approximate and should not be used to "rough-in" equipment.
2. Dimensions are subject to change without notice.

INDOOR UNIT

RSUB-61-K

CODE OPTIONS

CSD-1 Manual Reset LWCO



Notes:

1. Dimensions are approximate and should not be used to "rough-in" equipment.
2. Dimensions are subject to change without notice.

BOILER CERTIFIED RATINGS & CAPACITIES

| | | | |
|--------------------------------|--|-----------------------------------|---------------------|
| Fuel Type | Natural/Propane Gas | Boiler FLA | 11.3* |
| Input BTU/hr. | 2,000,000 / 586 kW | Min. Gas Pressure Required | 2" W.C.** |
| Output BTU/hr. | 1,703,999 / 499 kW | Max. Gas Pressure Allowed | 14" W.C. |
| Electrical Requirements | (L1, NEU, GND) 120VAC/ 1 ph / 60 hz | Operating Weight | 1003 lbs. / 455 kg. |

BOILER TEMPERATURE RISE / PRESSURE DROP

| 25°F / 13.9°C | | | | 30°F / 16.7°C | | | | 35°F / 19.4°C | | | |
|---------------|-----|---------------|------|---------------|-----|---------------|------|---------------|-----|---------------|-----|
| Flow Rate | | Pressure Drop | | Flow Rate | | Pressure Drop | | Flow Rate | | Pressure Drop | |
| GPM | L/s | Ft | kPa | GPM | L/s | Ft | kPa | GPM | L/s | Ft | kPa |
| 136.3 | 8.6 | 5.41 | 15.9 | 113.6 | 7.2 | 3.86 | 11.4 | 97.4 | 6.1 | 2.90 | 8.5 |

BOILER / WATER HEATER TRIM & CONTROLS

| | | | |
|--------------------------|-------------------|--------------------------|---------------------------|
| Main Gas Valve | Dungs MBC-SE | Air Switch | Cleveland NS2 |
| Firing Valve | 1 1/2" | Blower Motor | Fasco 1 hp - FLA 3.0 |
| Ignition Control | Honeywell RM7895C | Relief Valve - MW | 3/4" x 3/4" set @ 125 psi |
| Operating Control | HeatNet® | Relief Valve - MB | 1" x 1 1/4" set @ 50 psi |
| High Limit | Jumo | Flow Switch | TACO |
| Main Ball Valve | 1 1/2" | Pilot Regulator | White-Rodgers 25M |

WATER HEATER HOURLY RECOVERY CAPACITY (GPH & LPH)

| | | | | | | | | | | | |
|------|-------|------|-------|------|------|-------|------|-------|------|-------|------|
| 40°F | 22°C | 60°F | 33°C | 80°F | 44°C | 100°F | 56°C | 120°F | 67°C | 140°F | 78°C |
| 4922 | 18605 | 3281 | 12403 | 2461 | 9303 | 1969 | 7442 | 1641 | 6202 | 1406 | 5316 |

Futera III 2000 model water heater not available for sale in Canada due to NRCan Regulations.

A.S.M.E.

| | | | |
|---------------------------------|-------------------------------|--------------------|-----------------------|
| ASME Sect IV Htg Surface | 215.98 Sq. Ft. / 20.06 Sq. M. | Design Data | Max. 160 psig & 250°F |
| Water Volume | 5.7 gal / 21.58 Liters | | |

* Add circulator amps.
** For incoming gas pressures lower than 2" W.C. natural or propane, consult factory.

REP FIRM _____
 SUBMITTED BY _____
 JOB NAME _____
 ARCHITECT _____
 ENGINEER _____
 CONTRACTOR _____
 DATE _____

FUTERA III 2000

Category I, II or IV Appliance

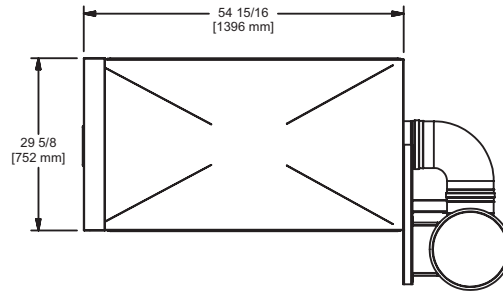
(see Installation and Operation Manual for venting information)



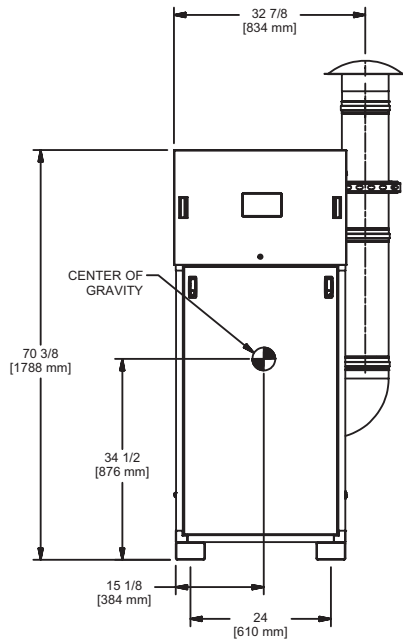
A Division of Mestek, Inc.
 Westfield, MA 01085
 (413) 568-9571

OUTDOOR UNIT

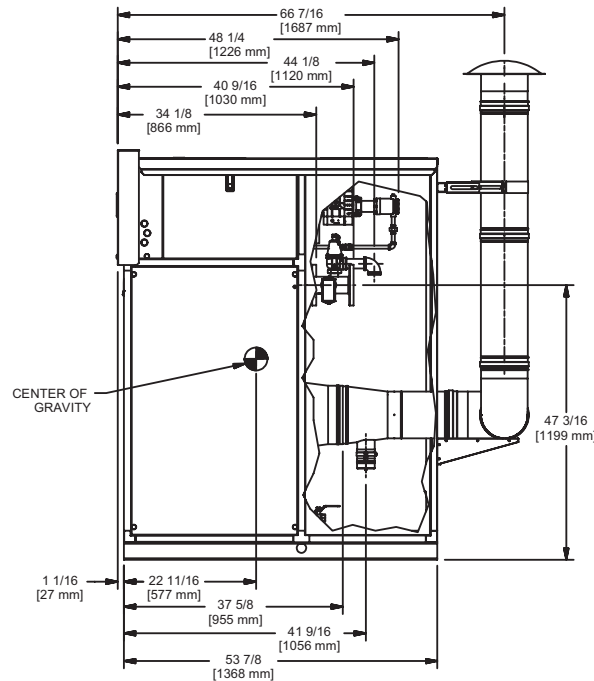
RSUB-116-B



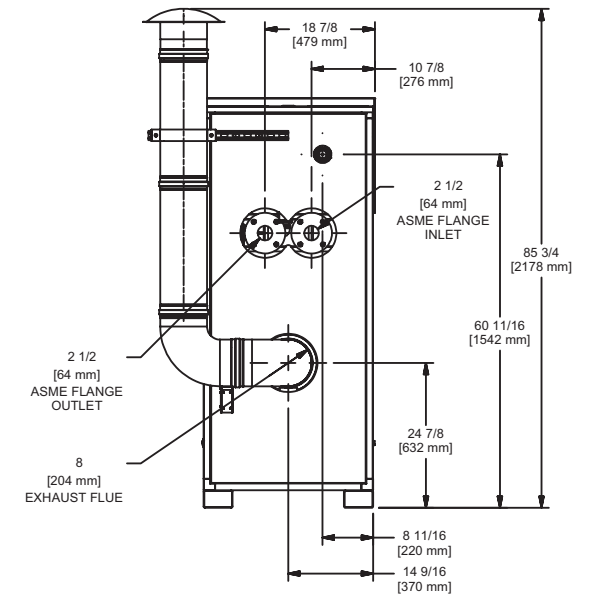
TOP VIEW



FRONT VIEW



SIDE VIEW



BACK VIEW

FUTERA III 2000

Notes:

1. Dimensions are approximate and should not be used to "rough-in" equipment.
2. Dimensions are subject to change without notice.